



User Guide

NewsPoint

PresentationPoint

Table of Contents

1	CONTROL THE NEWSPOINT PROCESS.....	5
1.1	START NEWSPOINT	5
1.2	STOP NEWSPOINT.....	7
2	CONFIGURE THE NEWSPOINT SERVICE	10
3	GETTING STARTED WITH NEWSPOINT	14
3.1	ADD A DATA FEED.....	15
3.2	EDIT A DATA FEED.....	16
3.3	DELETE A DATA FEED	16
3.4	USING A DATA FEED	16
3.5	HOW IT WORKS.....	16
3.6	WHERE TO STORE THE DATA?	17
3.7	HOW TO SET UP A MICROSOFT SQL SERVER DATABASE?.....	18
4	CALENDARS.....	19
4.1	GOOGLE CALENDAR	19
4.2	IDENTIFICATION	19
4.3	PROXY.....	20
4.4	RUNTIME.....	20
4.5	STATUS	20
4.6	STORAGE.....	21
5	DATABASES.....	22
5.1	IDENTIFICATION	22
5.2	RUNTIME.....	22
5.3	SOURCE DATABASE	22
5.4	SOURCE DATABASE MS ACCESS	23
5.5	SOURCE DATABASE MS SQL	23
5.6	SOURCE DATABASE MYSQL	23
5.7	SOURCE DATABASE ODBC	24
5.8	SOURCE DATABASE OLE DB.....	24
5.9	STATUS	25
5.10	STORAGE.....	25

6	IMAGES FEED.....	26
6.1	IDENTIFICATION	26
6.2	IMAGE	26
6.3	PROXY.....	26
6.4	RUNTIME.....	27
6.5	STATUS	27
7	RSS DATA FEEDS	28
7.1	FEED.....	28
7.2	IDENTIFICATION	28
7.3	PROXY.....	28
7.4	RUNTIME.....	29
7.5	STATUS	29
7.6	STORAGE.....	29
8	STOCK QUOTES.....	31
8.1	IDENTIFICATION	31
8.2	PROXY.....	31
8.3	RUNTIME.....	31
8.4	STATUS	32
8.5	STOCK QUOTES	32
8.6	STORAGE.....	32
9	WEATHER FEED.....	34
9.1	IDENTIFICATION	34
9.2	PROXY.....	34
9.3	RUNTIME.....	34
9.4	STATUS	35
9.5	STORAGE.....	35
9.6	WEATHER.....	36
10	WEBSITE FEEDS.....	39
10.1	IDENTIFICATION	39
10.2	PROXY.....	39
10.3	RUNTIME.....	39
10.4	STATUS	40

10.5	WEBSITE	40
11	XML FILES	41
11.1	IDENTIFICATION	41
11.2	RUNTIME.....	41
11.3	STATUS	41
11.4	STORAGE.....	42
11.5	XML FILE.....	42
12	LOGGING	43
13	ERRORS.....	44

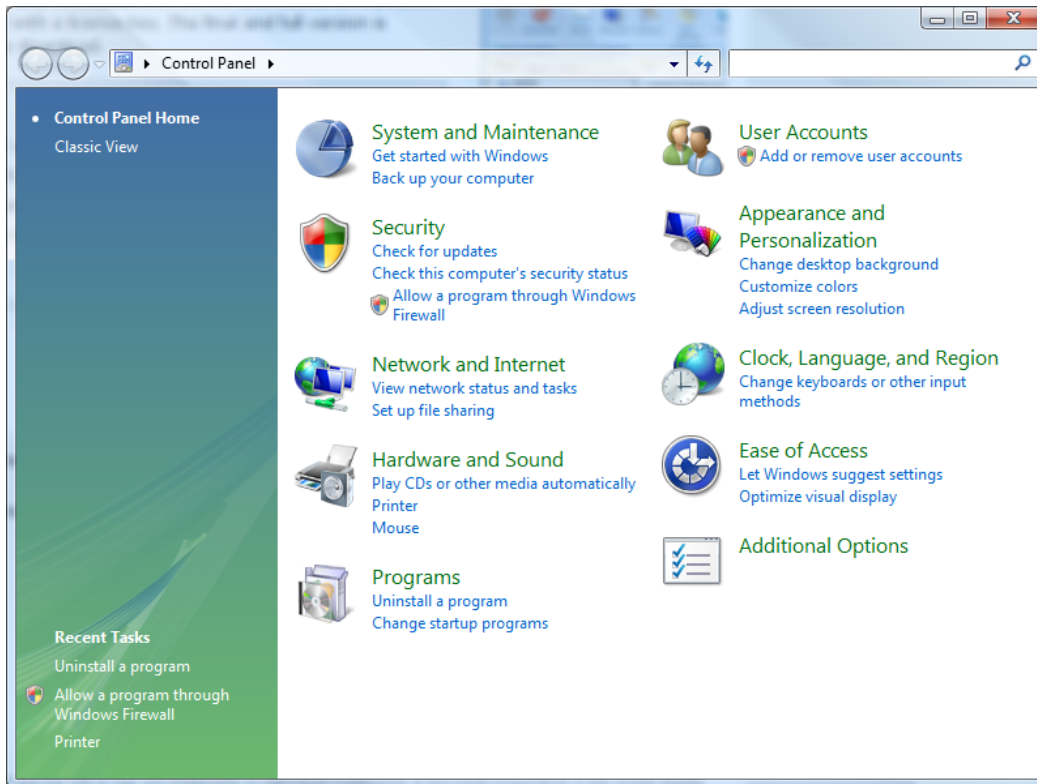
1 Control the NewsPoint process

This topic will explain how to start and stop the NewsPoint process.

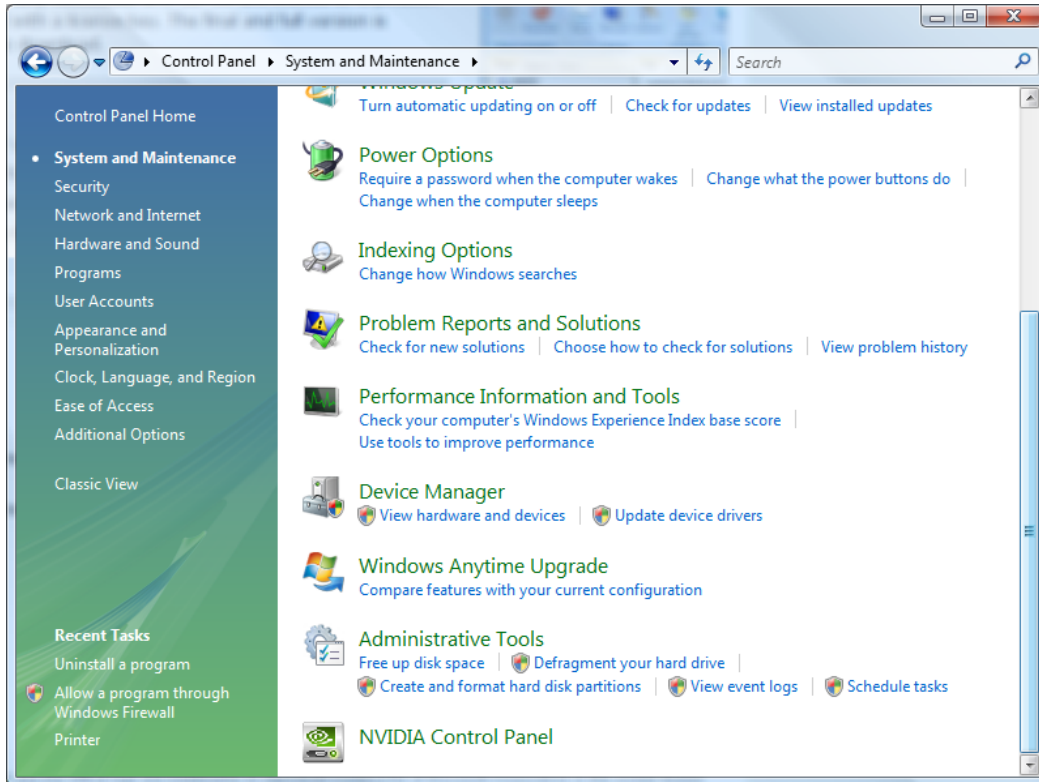
1.1 Start NewsPoint

By default the NewsPoint process is already running after installation. Also it will be started automatically after a system reboot.

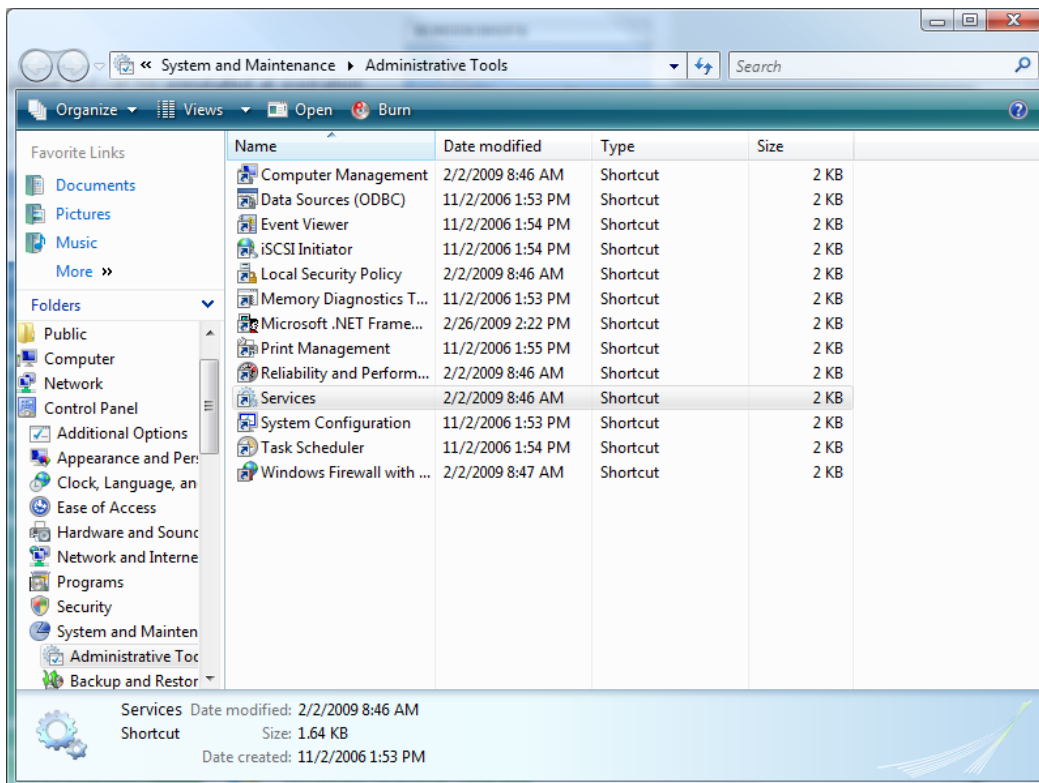
Click Start > Control Panel.



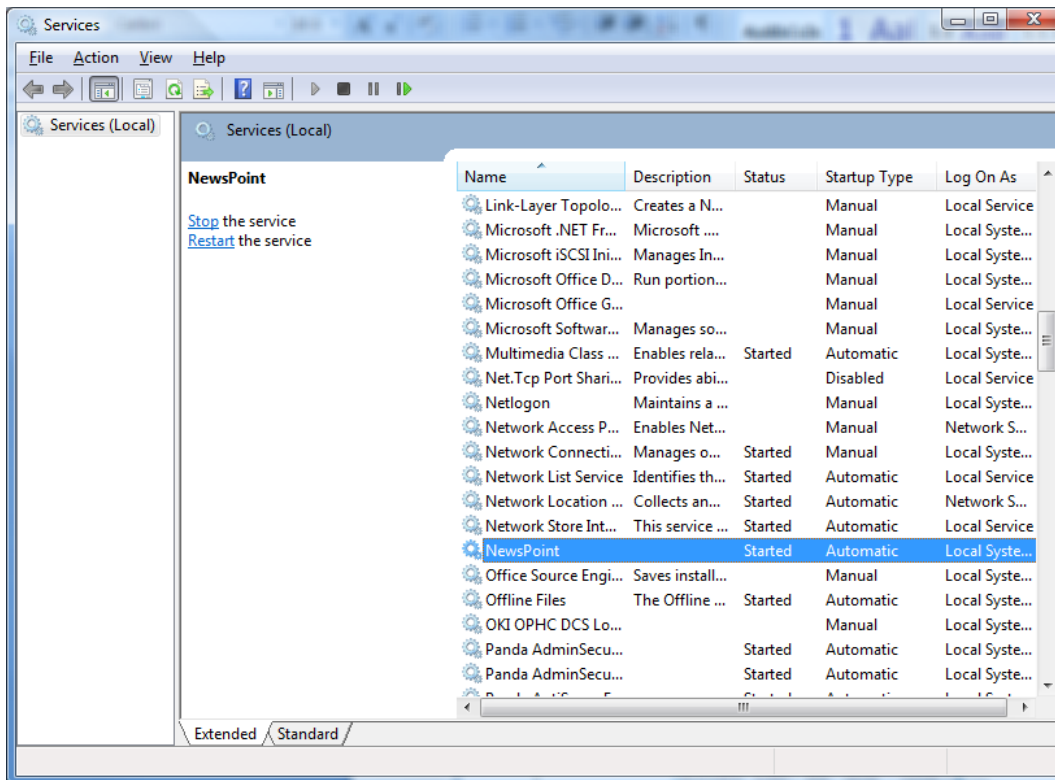
Click on System and Maintenance.



Click Administrative Tools.



Double click Services.

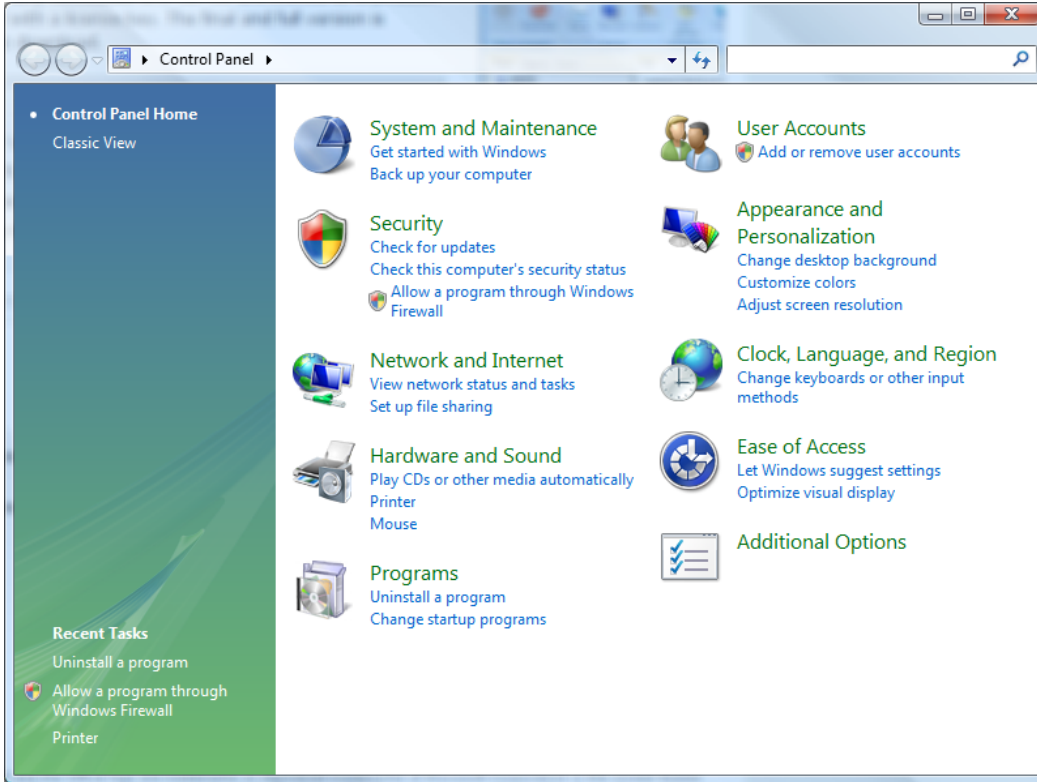


Locate the NewsPoint entry in the list. Right click the service and choose Start from the menu.

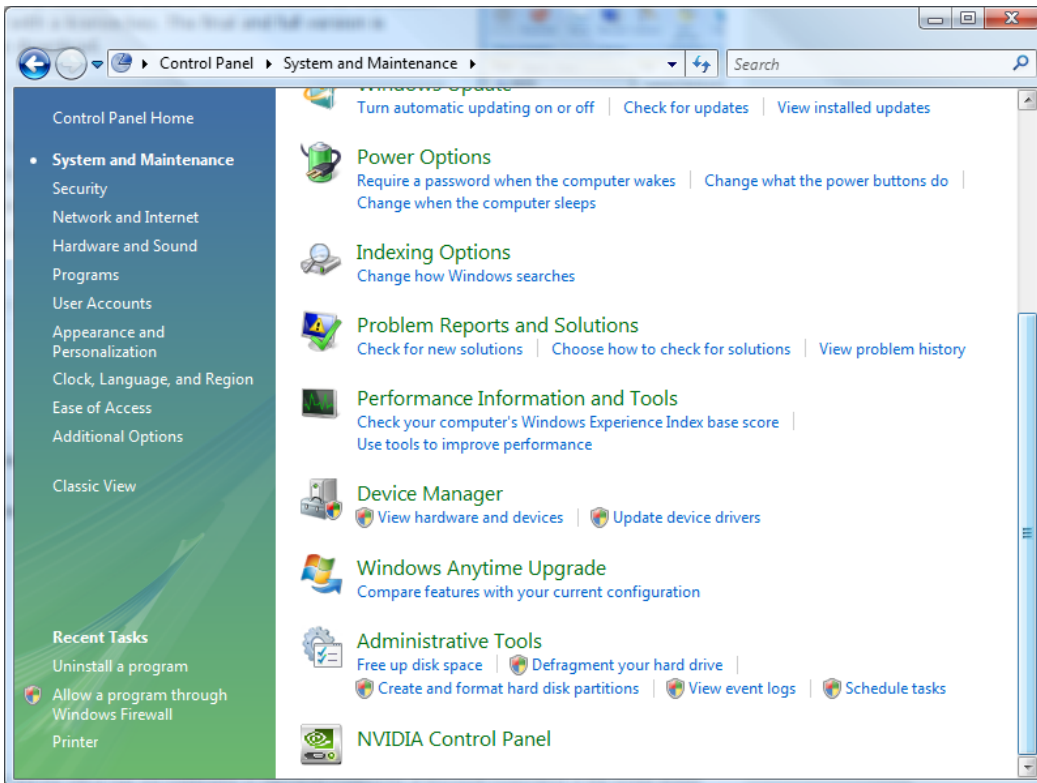
Note: To modify the starting option of the service, go into the service properties by right clicking the service. Choose Properties from the popup menu. The Startup type can be set to automatic, manual or disabled. Default value is Automatic. If you switch it to manual then you are responsible to start it manually.

1.2 Stop NewsPoint

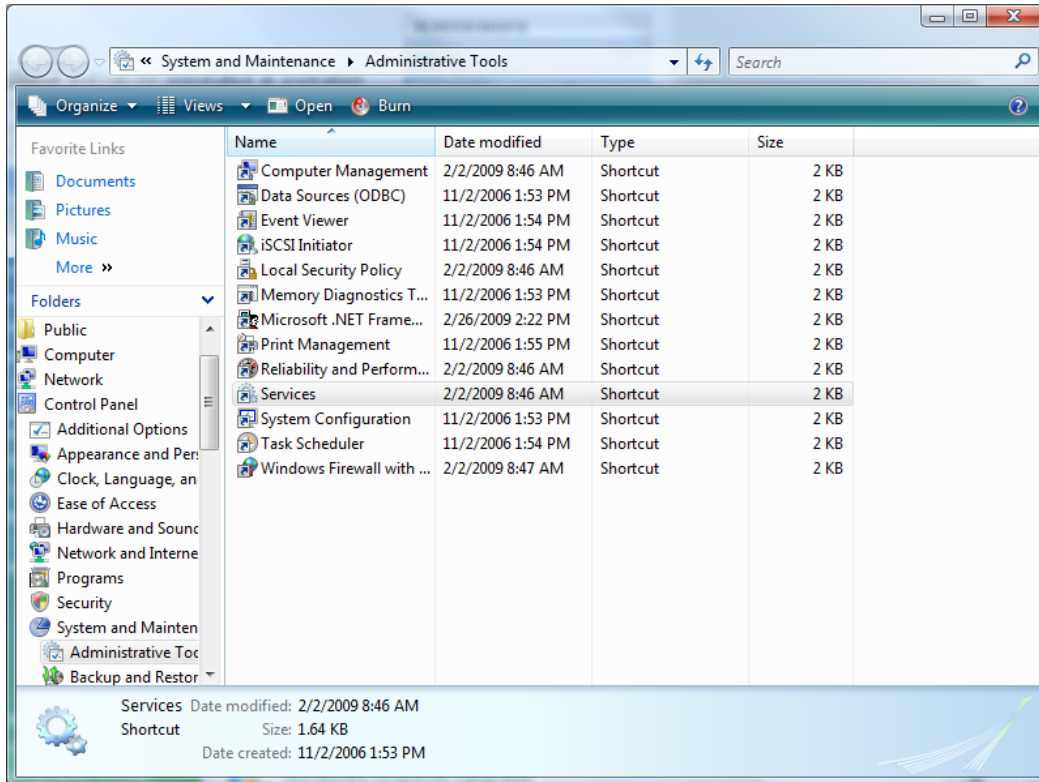
Click Start > Control Panel.



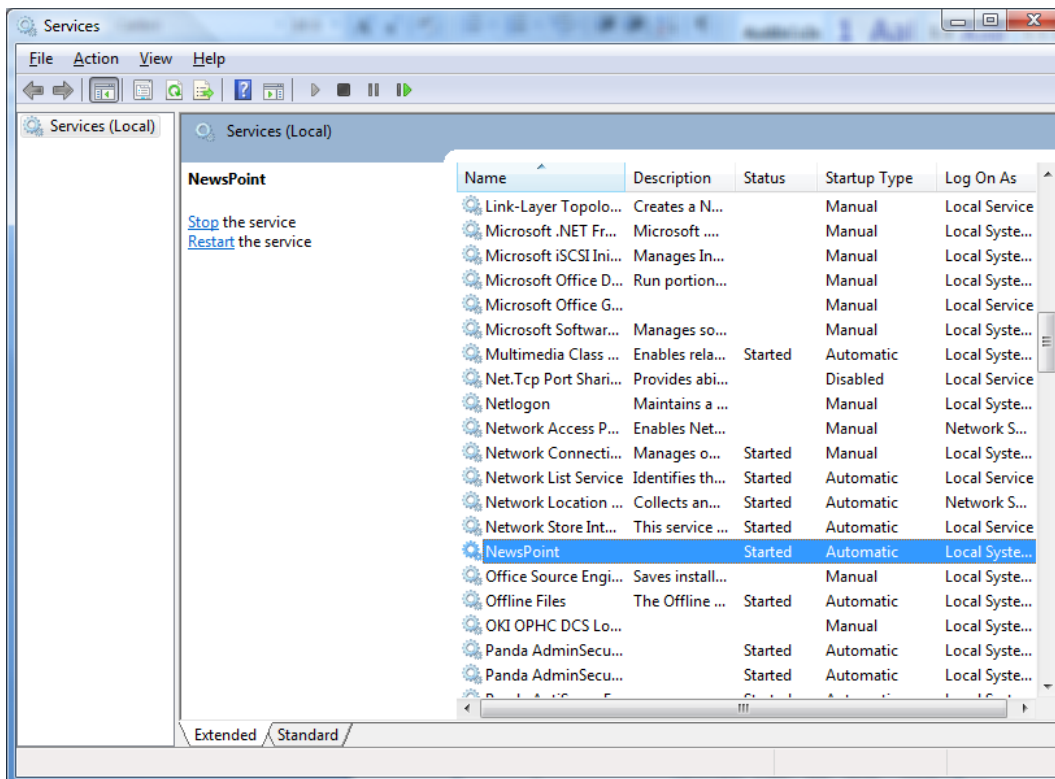
Click on System and Maintenance.



Click Administrative Tools.



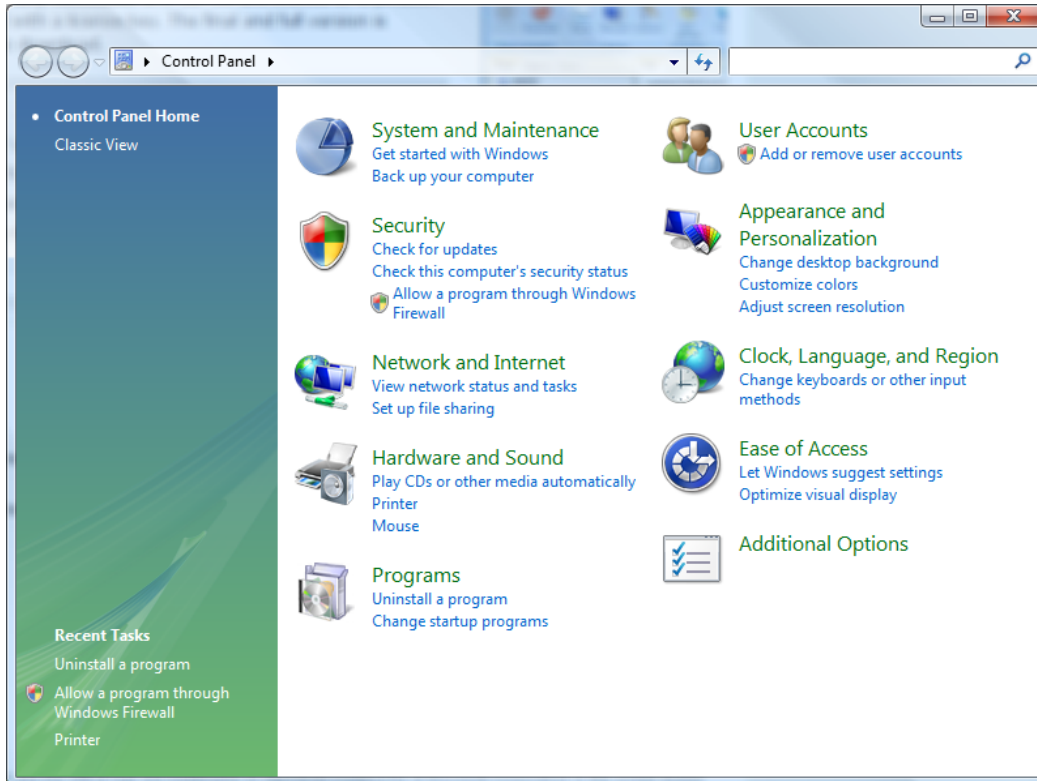
Double click Services.



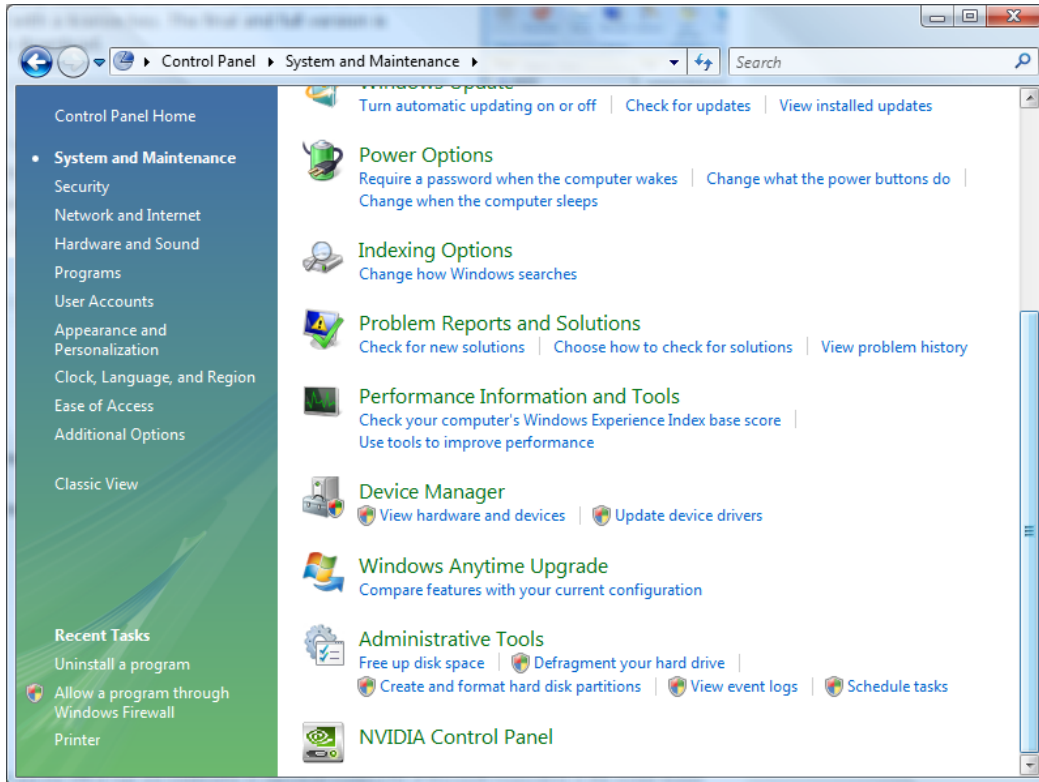
Locate the NewsPoint entry in the list. Right click the service and choose Stop from the menu.

2 Configure the NewsPoint service

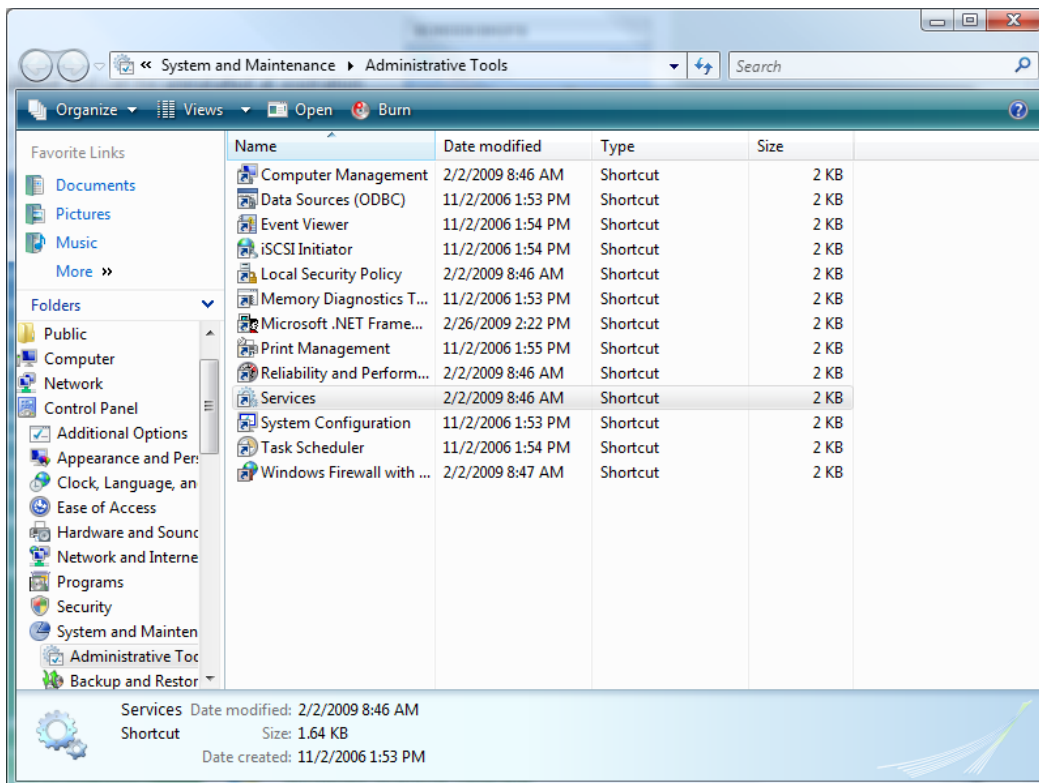
Click Start > Control Panel.



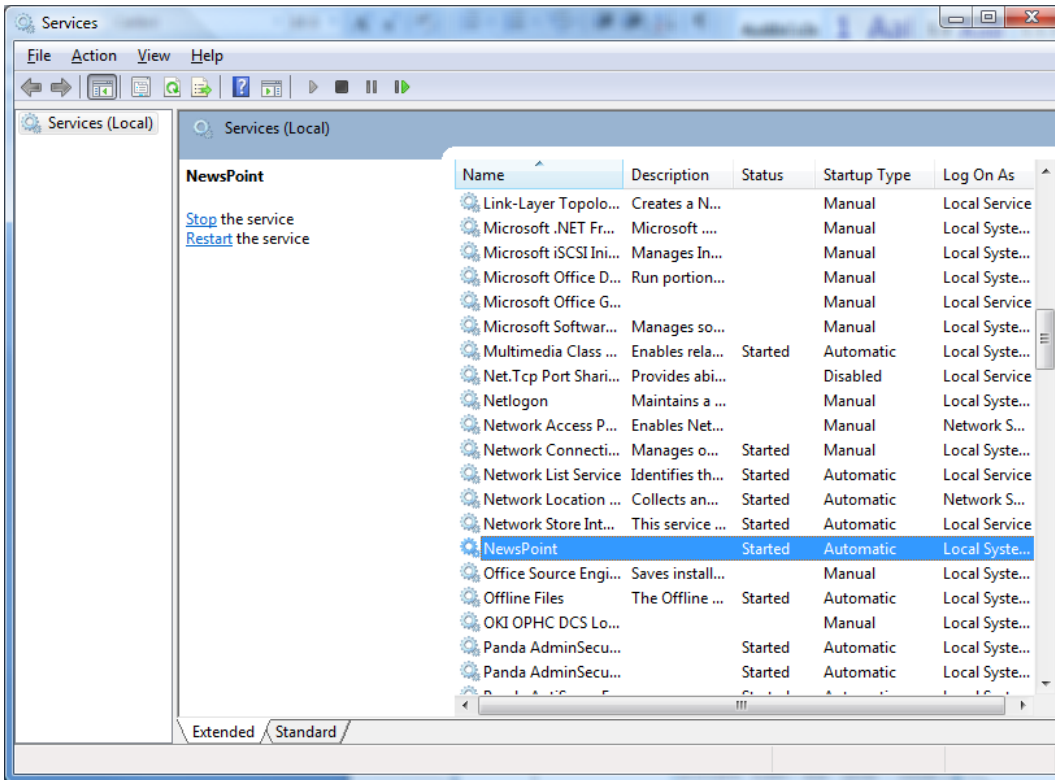
Click on System and Maintenance.



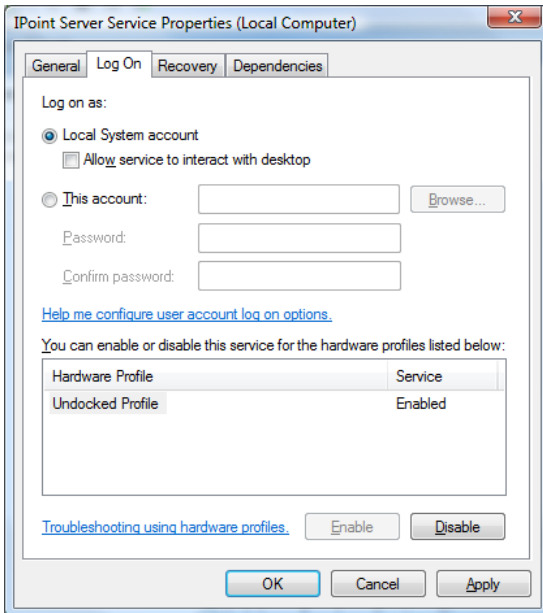
Click Administrative Tools.



Double click Services.



Locate the NewsPoint entry in the list. Right click the service and choose Properties from the menu. Select the Log On tab.



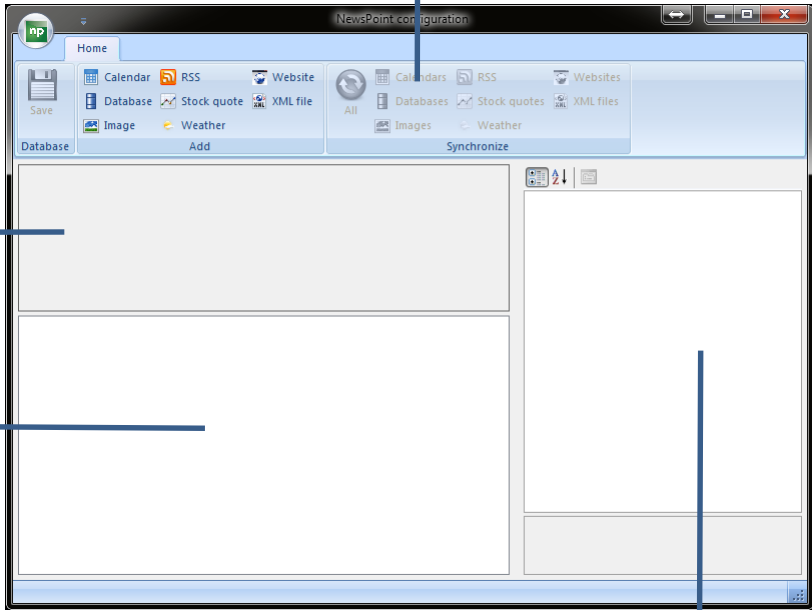
By default the service is running as Local System account. This implies that the service process only has access rights to local files on this machine. With this option enabled you can only use anonymously local databases to retrieve and store the NewsPoint information.

If you want to use NewsPoint database(s) from another computer - via UNC notation or mapped drives - then you will have to enter a valid username and password of a user that can access those network resources.

To do this check the 'This account' option and enter a valid username and password. Hit OK to apply the changes. To take these changes into account you will have to restart the service. This can be done from the services menu.

3 Getting started with NewsPoint

To start configuring NewsPoint click the Windows Start icon > All Programs > PresentationPoint > NewsPoint 2.0 > NewsPoint configuration.



The screenshot shows the NewsPoint configuration application window. The top menu bar contains three groups: Database, Add, and Synchronize. The main area is divided into a large central pane and a smaller right-hand pane. The central pane is currently empty. The right-hand pane is also empty. The bottom of the window features a status bar.

This area lists all data feeds that are available in your NewsPoint configuration.

The top menu contains 3 groups:

- Database: to save the data feed properties to a configuration file
- Add: to add new data feeds to the list
- Synchronize: manually execute all data feeds now


The output window shows information about actions, warnings, errors and activities of the selected data feed.

Property window where you can see and modify all attributes of the selected data feed.

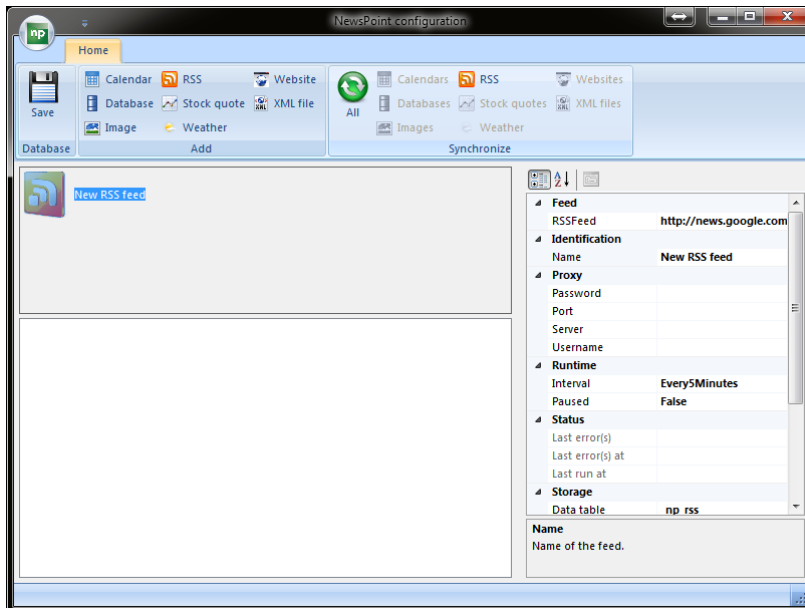
3.1 Add a data feed

You can add as many data feeds as you want. There are 8 types of feeds that you can use.

- Calendar: synchronize information from Google calendar
- Database: replicate database information to another database
- Image: duplicate continuously an image from a website
- RSS: listen to a RSS feed for news
- Stock quote: watch stock quote carefully
- Weather: collect a forecast of your local weather
- Website: grab an image of a website
- XML file: replicate data from an XML file to a database.

Click on the corresponding icon in the 'Add' group of the top menu. E.g. click on  to add a new RSS feed subscription to your NewsPoint system.

Now a new icon is added to your data feed list. At the right you can find all properties of this newly added RSS feed that you can modify.



Later on we will discuss the properties of the different data feeds more in details.



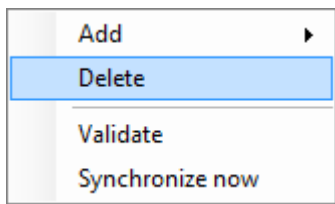
Now click the Save button in order to commit and save the changes to your NewsPoint configuration file.

3.2 Edit a data feed

Just click on the data feed that you want to modify. You will see its properties on the right hand side. Just modify the properties and click the Save button again to commit the changes.

3.3 Delete a data feed

Right click on the data feed that you want to delete and select Delete from the popup menu.



and confirm your deletion. Click the Save button again to commit the changes.

3.4 Using a data feed

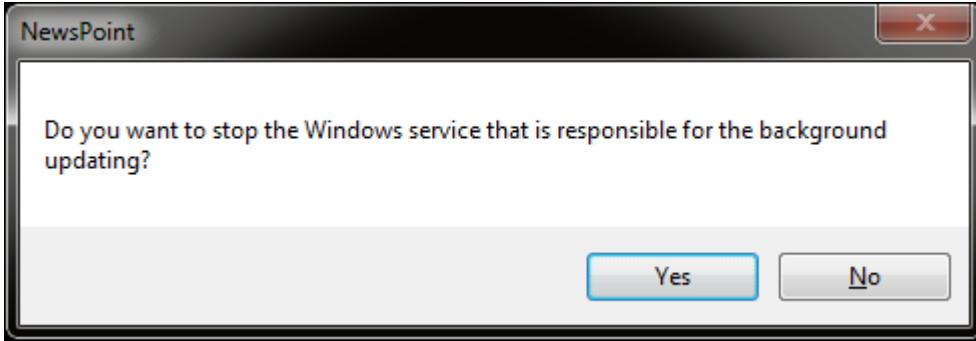
Once the information is processed and is available on your local network, then you can use our DataPoint or iPoint technology to use this information. With DataPoint you can easily display live news or stock quotes in your running Microsoft PowerPoint slideshow or display a playlist of images and weather information with iPoint's automatic distribution and scheduling features.

3.5 How it works

NewsPoint consists of 2 components; the NewsPoint configuration application and the NewsPoint Windows service.

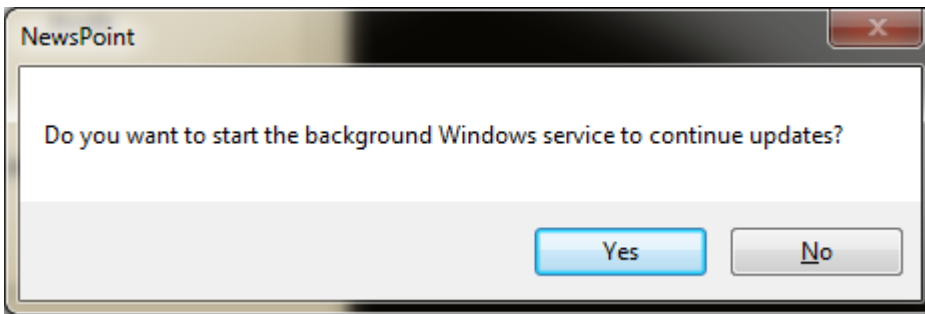
The NewsPoint Windows service is a service that runs in the background while your computer is running. It uses the same data feeds as configured in your NewsPoint configuration application.

When you start the NewsPoint configuration application, it will ask you to stop the Windows service.



You can now modify the data feeds in the configuration application. The background processing of all data feeds will also continue in this configuration application (as it was when running the Windows service).

When you exit the configuration application, it will ask you to start the Windows service again.



3.6 Where to store the data?

There are 2 typical places where you store the information; on a hard disk or in a database. An capture of a web page is stored as an image and is therefore saved to a hard disk. Stock quotes are names and numbers and is written to a database.

Feed	Hard disk	Database
Image	√	
Calendar		√
Database		√
Image	√	
RSS		√

Stock quote		√
Weather		√
Website	√	
Xml file		√

For database information you have the option to store data in a Microsoft Access database or in a Microsoft SQL server database.

The default NewsPoint database in Microsoft Access format can be found at
C:\ProgramData\PresentationPoint\NewsPoint\NewsPoint2.mdb.

If you want to use a Microsoft SQL server database then you have to create that database manually and create the tables from our database script.

Note: It is possible that the folder C:\ProgramData is hidden on your system. In that case you must turn system folders to visible.

3.7 How to set up a Microsoft SQL server database?

As a system or database administrator you have to create a new database in your Microsoft SQL server environment, e.g. named NewsPoint20. Once created, you run our script in that database. Our database script is named NewsPoint2.sql and can be found in the folder
C:\ProgramData\PresentationPoint\NewsPoint.

4 Calendars

Google Calendar (www.google.com/calendar) is a free and interesting tool to maintain your personal calendar but you can also use it to create a kind of scheduling system for your announcements or room bookings.

NewsPoint continuously copies the information from Google Calendar to your NewsPoint database. Then DataPoint technology can be used to display this information in a running Microsoft PowerPoint slideshow.

Here are the properties that you can manage for a calendar data feed.

4.1 Google calendar

Specify your Google calendar account information and specify the period of events you want to use.

Property	Description
Days back	When NewsPoint synchronizes this calendar information, it will consider events in the period [days back – days forward]. Specify here the maximum number of days in the past to synchronize. When you put the value 7, NewsPoint will synchronize all events older than 7 days.
Days forward	Set there the maximum value for the days in the future. When you put in here 31, it will synchronize all events for a maximum of 31 days in the future.
Password	Set your password of your Google calendar account.
Username	Set your username of your Google calendar account.

4.2 Identification

Property	Description
Name	Enter name or description of your feed.

4.3 Proxy

In some companies you have to specify proxy server settings before NewsPoint can access internet resources. Check with your network administrator for more details if needed.

Property	Description
Password	Password of your account at the proxy server.
Port	Proxy server port number.
Server	Name or IP address of your proxy server.
Username	Set your username in order to connect to your proxy server.

4.4 Runtime

Indicate how often NewsPoint should synchronize this data feed.

Property	Description
Interval	Set the interval of processing the data feed. Check how often the data is modified at the source in order to choose a realistic update frequency.
Paused	Exclude or include this data feed from automatic processing.

4.5 Status

Health monitoring of this data feed.

Property	Description
Last error(s)	Description or error message of the last unsuccessful processing batch.
Last error(s) at	At what date and time did the error(s) occur? Note that the error can be old and not relevant anymore at this time.

Last run at	Timestamp that indicates when the feed was last executed.
-------------	---

4.6 Storage

Specify where the results of this data feed is stored locally.

Property	Description
Data table	Name of the table in Microsoft Access or SQL server in which the data of this data feed is written to.
Database type	Select whether you want to use a Microsoft Access database or SQL Server database for data storage.

In case you selected MS Access as data storage:

MS Access database	Full path pointing to your Microsoft Access database where the data table can be found.
--------------------	---

In case you selected SQL Server as data storage:

SQL Server database	Name of the database at your Microsoft SQL server instance.
SQL Server machine	Name or IP address of your SQL server.
SQL Server password	Password to access your database.
SQL Server username	Username to access your database.
Use Windows authentication	Use direct Windows authentication to access your database. When enabled, it will use your current Windows logon credentials and you don't have to specify a SQL Server username and password.

5 Databases

Replicate the content of a data table of a database to another database. Note that the structure of the both database tables should be identical.

5.1 Identification

Property	Description
Name	Enter name or description of your feed.

5.2 Runtime

Indicate how often NewsPoint should synchronize this data feed.

Property	Description
Interval	Set the interval of processing the data feed. Check how often the data is modified at the source in order to choose a realistic update frequency.
Paused	Exclude or include this data feed from automatic processing.

5.3 Source database

Indicate which data table to synchronize and select the type of the source database. This can be a Microsoft Access database, Microsoft SQL server, MySQL server, ODBC database or a database that can be accessed via a general OLEDB provider.

Property	Description
Data table	Enter the name of the data table that is replicated.

Database type	Select the type of the source database. This option is important for the next source database settings. When you set this type to a Microsoft Access database, then you only have to set the properties in the 'Source database MS Access' section.
---------------	---

5.4 Source database MS Access

Property	Description
Database	Browse to select the Microsoft Access database.
Format	Choose MDB for Microsoft Access 2003 databases or ACCDB for the new 2007 and 2010 databases.
Password	Optional. Enter your password to log on to the database.
System database	Optional. Browse and select the system database.
Username	Optional. Enter username to log on to the database.

5.5 Source database MS SQL

Property	Description
Database	Enter the name of the database.
Password	Enter your password to log on to the database.
Server	Computer name or IP address of the SQL server.
Use Windows authentication	Use direct Windows authentication to access your database. When enabled, it will use your current Windows logon credentials and you don't have to specify a SQL Server username and password.
Username	Enter username to log on to the database.

5.6 Source database MySQL

Property	Description
----------	-------------

Database	Enter the name of the database.
Password	Enter your password to log on to the database.
Server	Computer name or IP address of the MySQL server.
Username	Enter username to log on to the database.

5.7 Source database ODBC

Property	Description
Database	Enter the name of the database.
Driver	Connection string for the ODBC database. The syntax of the connection string depends on the database system used.
Password	Enter your password to log on to the database.
Server	Computer name or IP address of the server.
Username	Enter username to log on to the database.

5.8 Source database OLE DB

Property	Description
Advanced	Optional. Additional information or parameters that can be added to the connection string.
Database	Name of the database.
Driver	Name of the provider used to access the database..
Password	Enter your password to log on to the database.
Server	Computer name or IP address of the server.
Username.	Enter username to log on to the database.

5.9 Status

Health monitoring of this data feed.

Property	Description
Last error(s)	Description or error message of the last unsuccessful processing batch.
Last error(s) at	At what date and time did the error(s) occur? Note that the error can be old and not relevant anymore at this time.
Last run at	Timestamp that indicates when the feed was last executed.

5.10 Storage

Specify where the results of this data feed is stored locally.

Property	Description
Database type	Select whether you want to use a Microsoft Access database or SQL Server database for data storage.

In case you selected MS Access as data storage:

MS Access database	Full path pointing to your Microsoft Access database where the data table can be found.
--------------------	---

In case you selected SQL Server as data storage:

SQL Server database	Name of the database at your Microsoft SQL server instance.
SQL Server machine	Name or IP address of your SQL server.
SQL Server password	Password to access your database.
SQL Server username	Username to access your database.
Use Windows authentication	Use direct Windows authentication to access your database. When enabled, it will use your current Windows logon credentials and you don't have to specify a SQL Server username and password.

6 Images feed

Sometimes you want to collect a specific image from a website and display this image in a PowerPoint. Typically examples are weather and stock images.

6.1 Identification

Property	Description
Name	Enter name or description of your feed.

6.2 Image

If you don't know the name of the image on a web server, then remember the name of the image. You can find out the name of the image by saving the image on the HTML page. Then you go to the source of that HTML file (right click, view source) and locate the full path of that filename. An example of an image url is <http://www.website.com/img/static/world.jpg>.

Property	Description
HTTP image	URL pointing to the image on the web server.
Local filename	Full path and filename of the image. The internet image will be saved as that name.

6.3 Proxy

In some companies you have to specify proxy server settings before NewsPoint can access internet resources. Check with your network administrator for more details if needed.

Property	Description
Password	Password of your account at the proxy server.
Port	Proxy server port number.

Server	Name or IP address of your proxy server.
Username	Set your username in order to connect to your proxy server.

6.4 Runtime

Indicate how often NewsPoint should synchronize this data feed.

Property	Description
Interval	Set the interval of processing the data feed. Check how often the data is modified at the source in order to choose a realistic update frequency.
Paused	Exclude or include this data feed from automatic processing.

6.5 Status

Health monitoring of this data feed.

Property	Description
Last error(s)	Description or error message of the last unsuccessful processing batch.
Last error(s) at	At what date and time did the error(s) occur? Note that the error can be old and not relevant anymore at this time.
Last run at	Timestamp that indicates when the feed was last executed.

7 RSS data feeds

All entries found at your RSS feed will be inserted or updated in your selected NewsPoint database. You can use e.g. our DataPoint product to visualize the NewsPoint information in real-time in your Microsoft PowerPoint presentations.

7.1 Feed

Property	Description
RSS feed	Full URL pointing to a news feed in a valid RSS format.
Strip HTML tags	<p>Some providers deliver the information in plain text format. Others deliver it with HTML formatting. When this option is set, all HTML tags and HTML formatting are removed from the information and is stripped to plain text.</p> <p>Note that PowerPoint cannot display HTML formatted text in a textbox, so when using this in PowerPoint, it is best to strip the HTML information before it is displayed.</p>

7.2 Identification

Property	Description
Name	Enter name or description of your feed.

7.3 Proxy

In some companies you have to specify proxy server settings before NewsPoint can access internet resources. Check with your network administrator for more details if needed.

Property	Description
Password	Password of your account at the proxy server.

Port	Proxy server port number.
Server	Name or IP address of your proxy server.
Username	Set your username in order to connect to your proxy server.

7.4 Runtime

Indicate how often NewsPoint should synchronize this data feed.

Property	Description
Interval	Set the interval of processing the data feed. Check how often the data is modified at the source in order to choose a realistic update frequency.
Paused	Exclude or include this data feed from automatic processing.

7.5 Status

Health monitoring of this data feed.

Property	Description
Last error(s)	Description or error message of the last unsuccessful processing batch.
Last error(s) at	At what date and time did the error(s) occur? Note that the error can be old and not relevant anymore at this time.
Last run at	Timestamp that indicates when the feed was last executed.

7.6 Storage

Specify where the results of this data feed is stored locally.

Property	Description
----------	-------------

Data table	Name of the table in Microsoft Access or SQL server in which the data of this data feed is written to.
Database type	Select whether you want to use a Microsoft Access database or SQL Server database for data storage.

In case you selected MS Access as data storage:

MS Access database	Full path pointing to your Microsoft Access database where the data table can be found.
--------------------	---

In case you selected SQL Server as data storage:

SQL Server database	Name of the database at your Microsoft SQL server instance.
SQL Server machine	Name or IP address of your SQL server.
SQL Server password	Password to access your database.
SQL Server username	Username to access your database.
Use Windows authentication	Use direct Windows authentication to access your database. When enabled, it will use your current Windows logon credentials and you don't have to specify a SQL Server username and password.

8 Stock quotes

Not much is more volatile and important than stock quotes. Use NewsPoint to retrieve current stock quotes of multiple companies and display it in a live PowerPoint presentation.

8.1 Identification

Property	Description
Name	Enter name or description of your feed.

8.2 Proxy

In some companies you have to specify proxy server settings before NewsPoint can access internet resources. Check with your network administrator for more details if needed.

Property	Description
Password	Password of your account at the proxy server.
Port	Proxy server port number.
Server	Name or IP address of your proxy server.
Username	Set your username in order to connect to your proxy server.

8.3 Runtime

Indicate how often NewsPoint should synchronize this data feed.

Property	Description
Interval	Set the interval of processing the data feed. Check how often the data is modified at the source in order to choose a realistic update frequency.

Paused	Exclude or include this data feed from automatic processing.
--------	--

8.4 Status

Health monitoring of this data feed.

Property	Description
Last error(s)	Description or error message of the last unsuccessful processing batch.
Last error(s) at	At what date and time did the error(s) occur? Note that the error can be old and not relevant anymore at this time.
Last run at	Timestamp that indicates when the feed was last executed.

8.5 Stock quotes

Specify the stock quote that you want to monitor.

Property	Description
Provider	Select the provider to get the stock quotes from. Currently only the Yahoo service is implemented. For more information see http://finance.yahoo.com/ .
Stock symbols	Stock code or list of multiple stock quotes to be processed. In case of multiple stock quotes, separate the stock codes by space.

Note: Look up the correct code of a company at <http://finance.yahoo.com/lookup> if you are uncertain.

8.6 Storage

Specify where the results of this data feed is stored locally.

Property	Description
----------	-------------

Data table	Name of the table in Microsoft Access or SQL server in which the data of this data feed is written to.
Database type	Select whether you want to use a Microsoft Access database or SQL Server database for data storage.

In case you selected MS Access as data storage:

MS Access database	Full path pointing to your Microsoft Access database where the data table can be found.
--------------------	---

In case you selected SQL Server as data storage:

SQL Server database	Name of the database at your Microsoft SQL server instance.
SQL Server machine	Name or IP address of your SQL server.
SQL Server password	Password to access your database.
SQL Server username	Username to access your database.
Use Windows authentication	Use direct Windows authentication to access your database. When enabled, it will use your current Windows logon credentials and you don't have to specify a SQL Server username and password.

9 Weather feed

Almost every display or monitor is displaying live news flashes and weather information. Use NewsPoint to retrieve current weather conditions and forecasts and display it in a live PowerPoint presentation.

9.1 Identification

Property	Description
Name	Enter name or description of your feed.

9.2 Proxy

In some companies you have to specify proxy server settings before NewsPoint can access internet resources. Check with your network administrator for more details if needed.

Property	Description
Password	Password of your account at the proxy server.
Port	Proxy server port number.
Server	Name or IP address of your proxy server.
Username	Set your username in order to connect to your proxy server.

9.3 Runtime

Indicate how often NewsPoint should synchronize this data feed.

Property	Description
Interval	Set the interval of processing the data feed. Check how often the data is modified at the source in order to choose a realistic update frequency.

Paused	Exclude or include this data feed from automatic processing.
--------	--

9.4 Status

Health monitoring of this data feed.

Property	Description
Last error(s)	Description or error message of the last unsuccessful processing batch.
Last error(s) at	At what date and time did the error(s) occur? Note that the error can be old and not relevant anymore at this time.
Last run at	Timestamp that indicates when the feed was last executed.

9.5 Storage

Specify where the results of this data feed is stored locally.

Property	Description
Data table	Name of the table in Microsoft Access or SQL server in which the data of this data feed is written to.
Database type	Select whether you want to use a Microsoft Access database or SQL Server database for data storage.

In case you selected MS Access as data storage:

MS Access database	Full path pointing to your Microsoft Access database where the data table can be found.
--------------------	---

In case you selected SQL Server as data storage:

SQL Server database	Name of the database at your Microsoft SQL server instance.
SQL Server machine	Name or IP address of your SQL server.
SQL Server password	Password to access your database.

SQL Server username	Username to access your database.
Use Windows authentication	Use direct Windows authentication to access your database. When enabled, it will use your current Windows logon credentials and you don't have to specify a SQL Server username and password.

9.6 Weather

Specify the location to retrieve the weather information for.

Property	Description
Provider	Select the provider to get the weather information from. Currently only the Yahoo service is implemented. For more information see http://weather.yahoo.com/ .
URL	<p>Yahoo Weather API URL for your location. Go to https://developer.yahoo.com/weather/.</p> <p>Set the Responses to XML. At the YQL Query, change the text nome, ak into your location. E.g. New York, USA or Paris, France. Then hit the Test button.</p> <p>For units, you can add the text and u='c' to the SQL statement. C for Celsius or F for Fahrenheit (default).</p> <p>The url at the Endpoint here, is the url that you need in NewsPoint.</p>

Full documentation about the Yahoo weather API can be found at

<http://developer.yahoo.com/weather/>.

We just list here shortly the possible values of the weather condition code.

Code	Description
0	tornado
1	tropical storm
2	hurricane

3	severe thunderstorms
4	thunderstorms
5	mixed rain and snow
6	mixed rain and sleet
7	mixed snow and sleet
8	freezing drizzle
9	drizzle
10	freezing rain
11	showers
12	showers
13	snow flurries
14	light snow showers
15	blowing snow
16	snow
17	hail
18	sleet
19	dust
20	foggy
21	haze
22	smoky
23	blustery
24	windy
25	cold
26	cloudy
27	mostly cloudy (night)
28	mostly cloudy (day)
29	partly cloudy (night)
30	partly cloudy (day)
31	clear (night)
32	sunny
33	fair (night)
34	fair (day)

35	mixed rain and hail
36	hot
37	isolated thunderstorms
38	scattered thunderstorms
39	scattered thunderstorms
40	scattered showers
41	heavy snow
42	scattered snow showers
43	heavy snow
44	partly cloudy
45	thundershowers
46	snow showers
47	isolated thundershowers
3200	not available

10 Website feeds

Sometimes you want to display a web site or web page on a slide. This type of feed will capture the web page and save it as an image and store it on your hard disk.

10.1 Identification

Property	Description
Name	Enter name or description of your feed.

10.2 Proxy

In some companies you have to specify proxy server settings before NewsPoint can access internet resources. Check with your network administrator for more details if needed.

Property	Description
Password	Password of your account at the proxy server.
Port	Proxy server port number.
Server	Name or IP address of your proxy server.
Username	Set your username in order to connect to your proxy server.

10.3 Runtime

Indicate how often NewsPoint should synchronize this data feed.

Property	Description
Interval	Set the interval of processing the data feed. Check how often the data is modified at the source in order to choose a realistic update frequency.

Paused	Exclude or include this data feed from automatic processing.
--------	--

10.4 Status

Health monitoring of this data feed.

Property	Description
Last error(s)	Description or error message of the last unsuccessful processing batch.
Last error(s) at	At what date and time did the error(s) occur? Note that the error can be old and not relevant anymore at this time.
Last run at	Timestamp that indicates when the feed was last executed.

10.5 Website

Property	Description
Image format	Choose the format of the image when it is saved, e.g. JPG, GIF, PNG, ...
Local filename	NewsPoint will capture an image of the web page and save it as this filename. This filename is the full path and filename but without the filename.
URL	URL pointing to the web page that you want to capture.

11 XML files

Replicate the content of an XML file from a web site or local hard disk to a database. Note that all data tables in the XML file will be processed. So in the event that you have multiple data tables, all tables will be replicated to the target database.

11.1 Identification

Property	Description
Name	Enter name or description of your feed.

11.2 Runtime

Indicate how often NewsPoint should synchronize this data feed.

Property	Description
Interval	Set the interval of processing the data feed. Check how often the data is modified at the source in order to choose a realistic update frequency.
Paused	Exclude or include this data feed from automatic processing.

11.3 Status

Health monitoring of this data feed.

Property	Description
Last error(s)	Description or error message of the last unsuccessful processing batch.
Last error(s) at	At what date and time did the error(s) occur? Note that the error can be old and not relevant anymore at this time.

Last run at	Timestamp that indicates when the feed was last executed.
-------------	---

11.4 Storage

Specify where the results of this data feed is stored locally.

Property	Description
Database type	Select whether you want to use a Microsoft Access database or SQL Server database for data storage.

In case you selected MS Access as data storage:

MS Access database	Full path pointing to your Microsoft Access database where the data table can be found.
--------------------	---

In case you selected SQL Server as data storage:

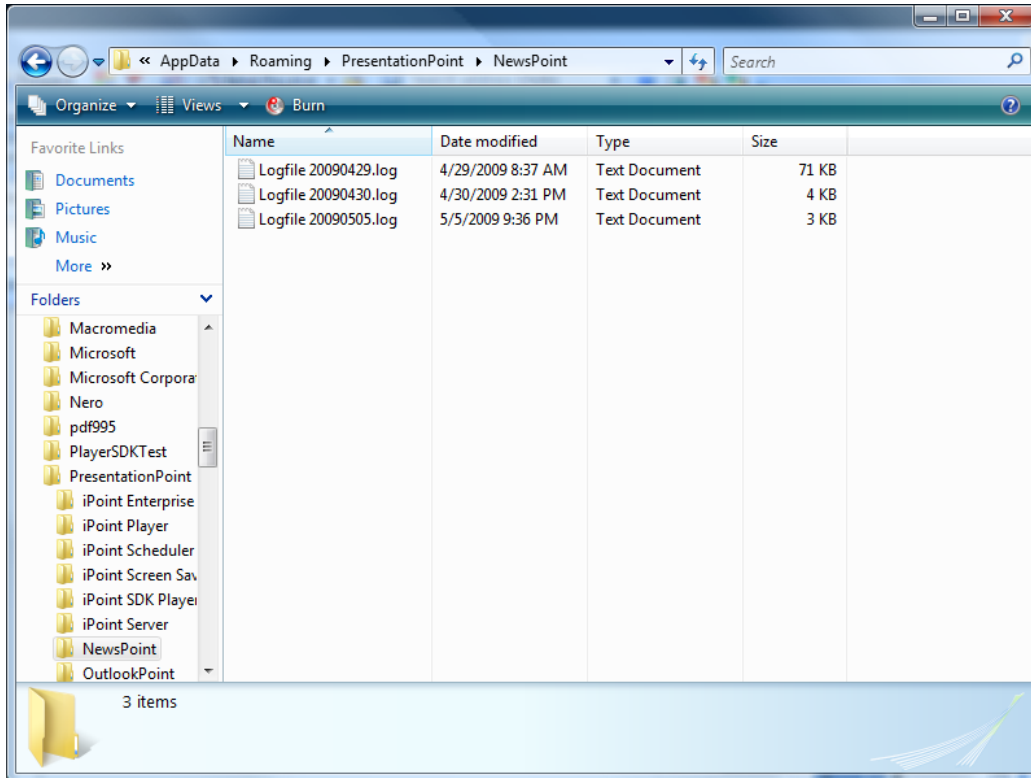
SQL Server database	Name of the database at your Microsoft SQL server instance.
SQL Server machine	Name or IP address of your SQL server.
SQL Server password	Password to access your database.
SQL Server username	Username to access your database.
Use Windows authentication	Use direct Windows authentication to access your database. When enabled, it will use your current Windows logon credentials and you don't have to specify a SQL Server username and password.

11.5 XML file

Property	Description
XML file	Browse and select the XML file that you want to replicate.

12 Logging

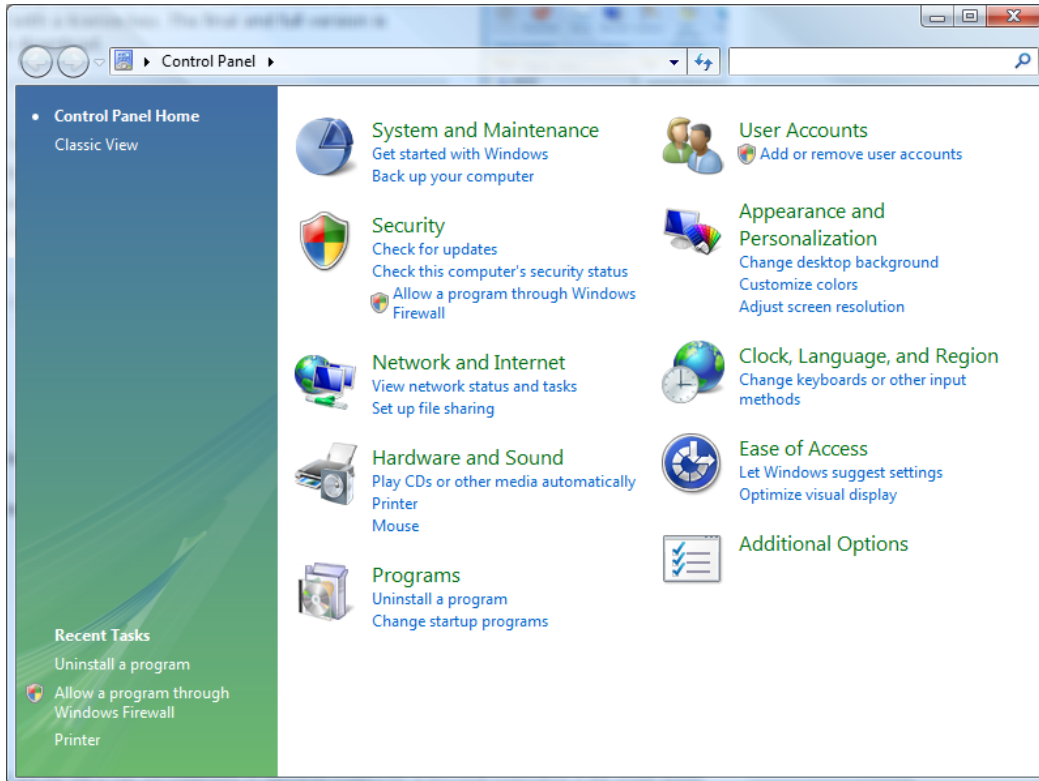
A detailed logfile about the activity of NewsPoint is written to your file system. In that given folder, you will find a logfile for each day with a maximum of 15 days. The location of this folder is `C:\Users\[username]\AppData\Roaming\PresentationPoint\NewsPoint`.



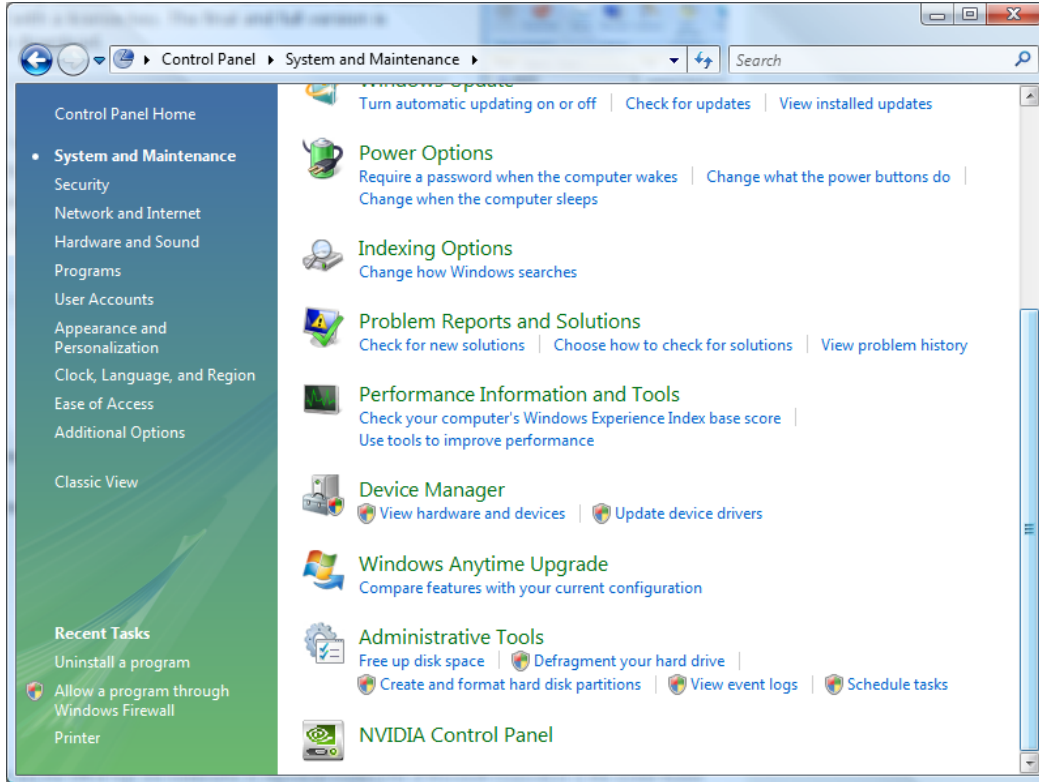
13 Errors

Errors that NewsPoint encountered while processing the RSS feeds are inserted into the event viewer.

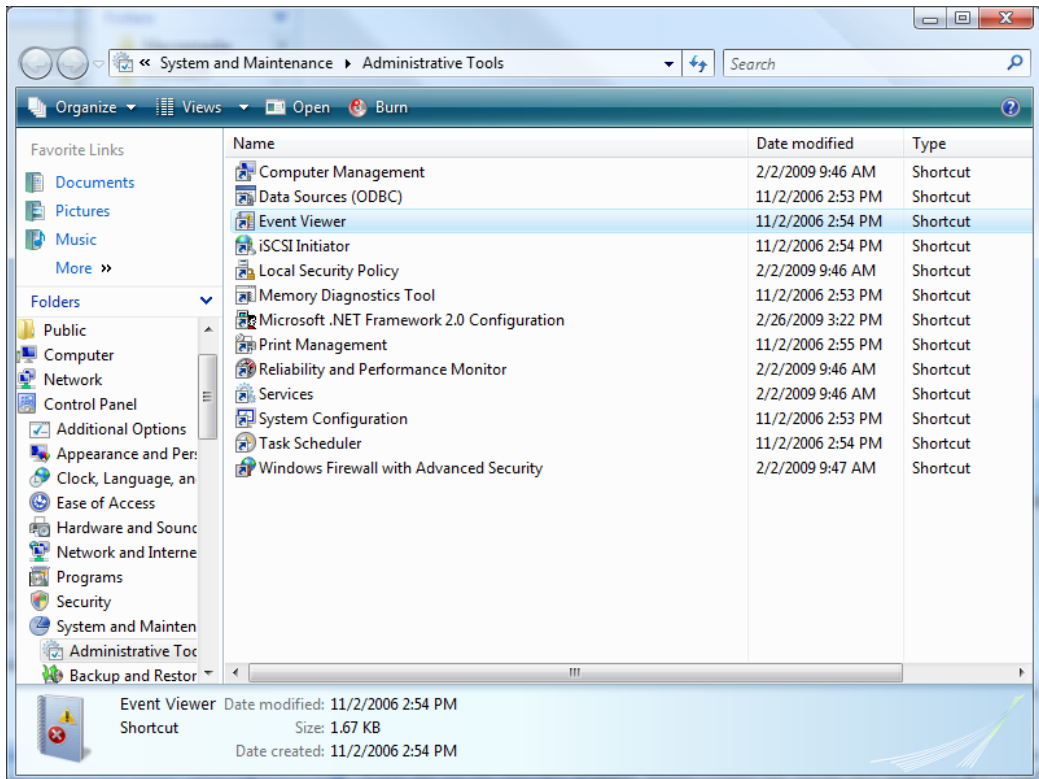
Click Start > Control Panel.



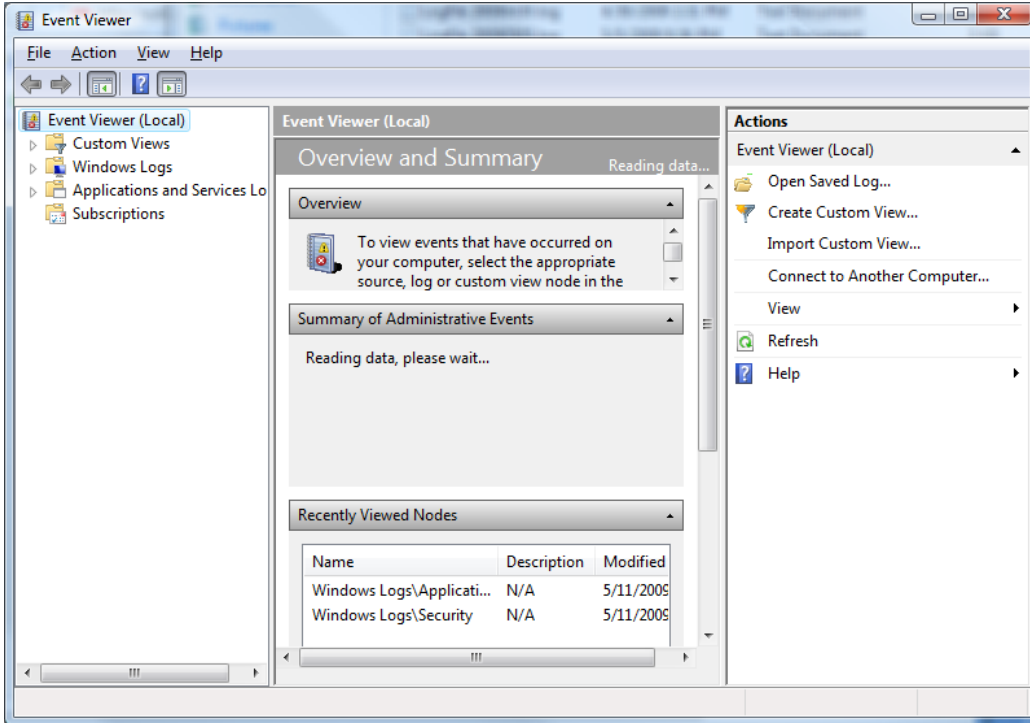
Click on System and Maintenance.



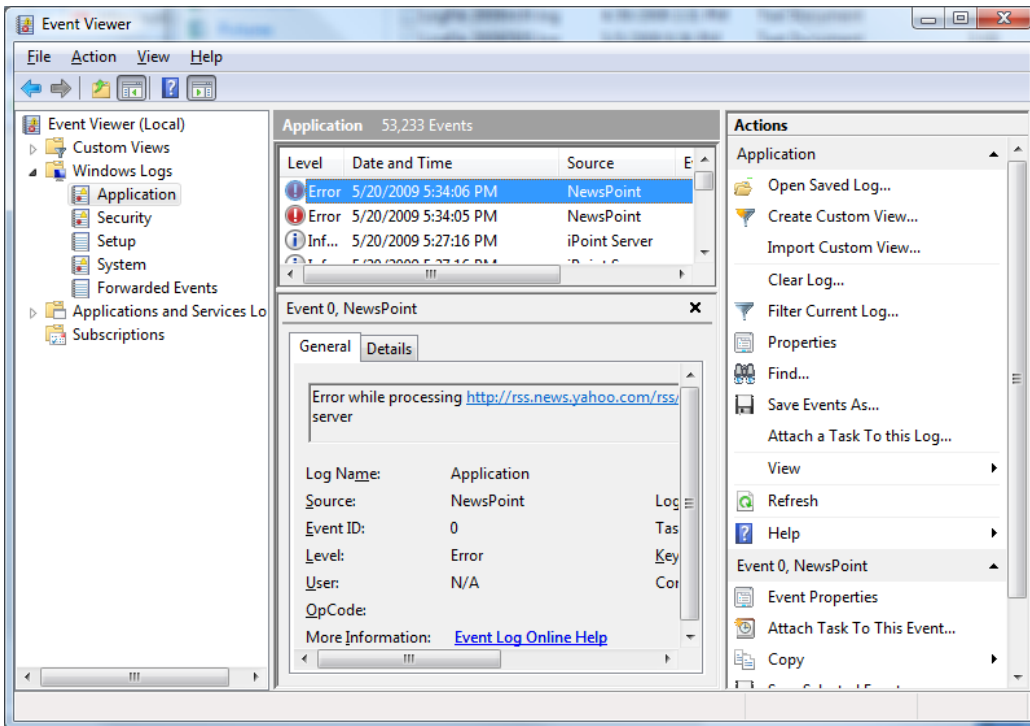
Click Administrative Tools.



Double click Event Viewer.



Click Windows Logs > Application and you will see a list of all messages. Locate the NewsPoint entries by verifying the Source field.



You can open an entry by double-clicking the entry.

